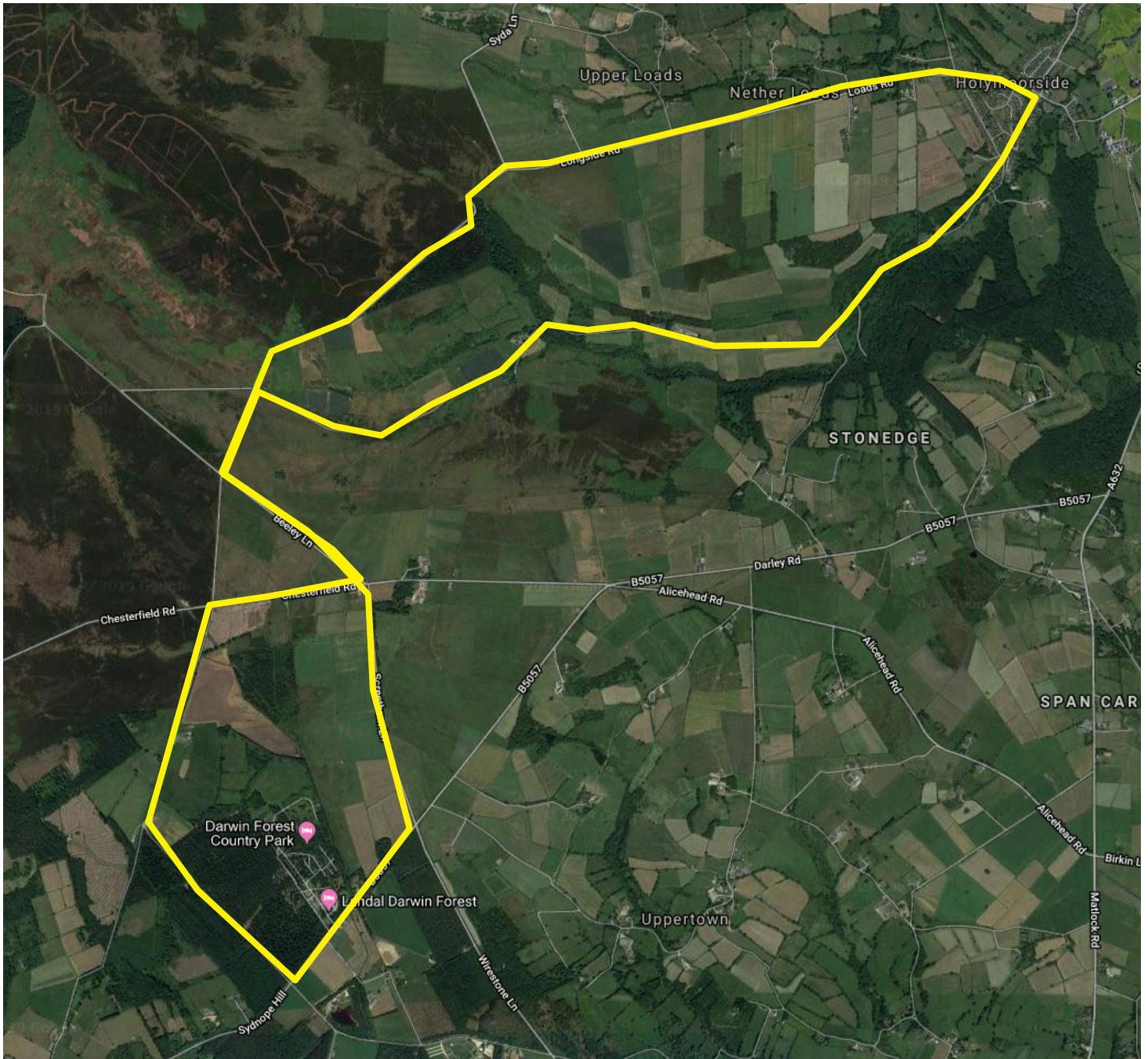


# Cycle Routes



ROUTE NAME

## Holymoorside and Beeley Moor



Download the route GPX files at  
[www.darwinforest.co.uk/cycling](http://www.darwinforest.co.uk/cycling)

Darwin Forest

LUXURY LODGE HOLIDAYS



# Cycle Routes



ROUTE NAME

## Holymoorside and Beeley Moor

### Directions:

- 1 Left out of Darwin Forest entrance.
- 2 1st Left at T-junction (signpost Beeley and Chatsworth).
- 3 2nd Left (signpost Beeley and Chatsworth).
- 4 1st right (no sign).
- 5 Straight ahead long descent continue straight ahead (signpost Holymoorside and Chesterfield).
- 6 Pass Holymoorside village sign and continue down long descent.
- 7 Take 4th right at T-junction (signpost Walton).
- 8 Straight ahead up New Road passing Country Store on left.
- 9 Left at crossroads (no sign).
- 10 Left at T-junction (no sign).
- 11 Right at multi junction. (signpost Darley Dale and Matlock).
- 12 1st left Flash Lane (no sign).
- 13 Left at crossroads and left back into Darwin Forest.

START / END POINT	Darwin Forest DE4 5PL
DISTANCE	18 km / 11miles
ASCENT	295m / 969ft
GRADE	Moderate
TERRAIN	100% road
CAFES:	-
PUBS:	Holymoorside
SHOPS:	Holymoorside
RISK ASSESSMENT:	Special care needed at junctions, narrow lanes and steep descents.

#### COMPLETED BY:

Carol Parsons,  
Glory Days Bikes

25/06/2019

